



Hey and Associates, Inc.

Village of Glencoe

Stormwater Master Plan Open House

September 29, 2025



Stormwater Management



■ Storm Sewer Definitions

- Collects rainwater and surface runoff
- Storm Sewer: Concrete/PVC pipes that carry runoff
- Inlet / Catch Basin: Collect runoff from streets
- Outlets: Open discharges to ravine/river

■ Sanitary Sewer Definitions

- Collects household wastewater/sewage
- Services: Connect homes to sanitary sewer mains

■ Separate sewers in Glencoe

Project Introduction

■ What is a stormwater master plan?

- Comprehensive review and evaluation of the Village's stormwater management system and policies

■ Why do a stormwater master plan?

- Glencoe's stormwater infrastructure is complex, unique and aging
- A roadmap for investments in the coming years by prioritizing future projects
- Supports future grant applications



Project Timeline

■ 2025 – Phase 1

- May Project Kickoff and infrastructure analysis
- June Resident Survey / Website Launched
- June Start of existing modeling
- September Open House
- December Complete existing model

■ 2026 – Phase 2

- Winter/Spring Develop alternative projects and policies
- Spring Second Open House
- Summer/Fall Final report and project priorities

Phase 1

■ How do we review existing infrastructure and policies?

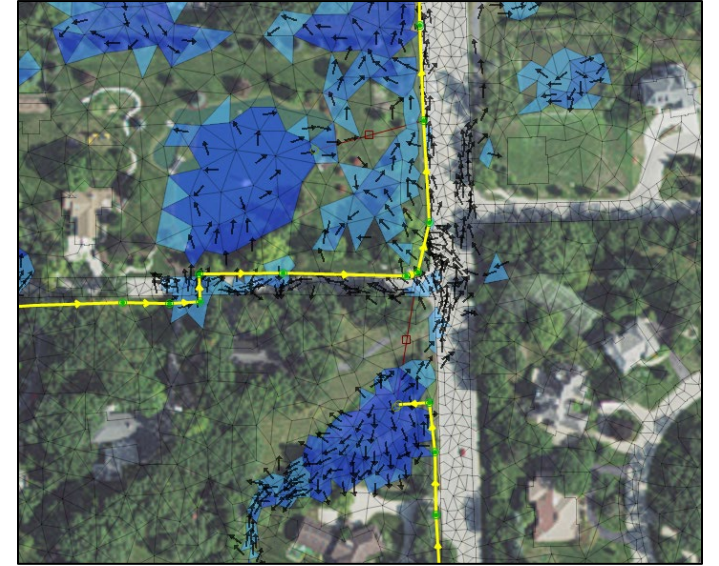
- Evaluate existing storm sewer data
- Complete field investigations
- Create stormwater model
- Review Village policies in comparison with neighboring communities and best practices



Existing Model

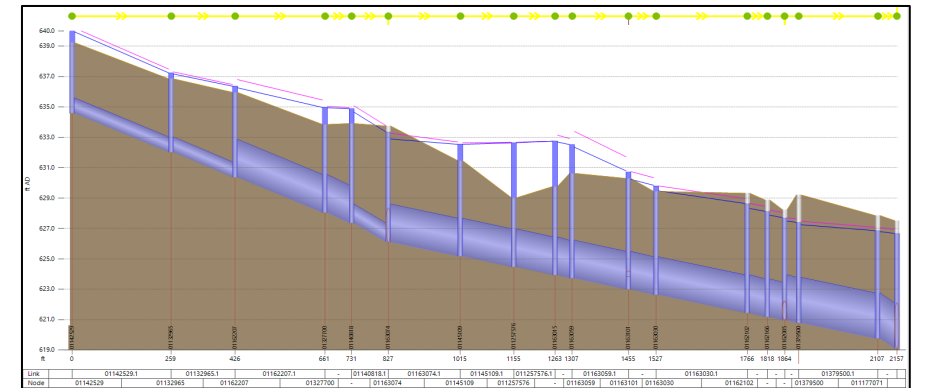
■ How do we assess existing conditions?

- Build model hydrologic and hydraulic model with available storm sewer data
- Run “design storms” with x inches of rain in y period (i.e. 5-year, 2-hour, 10-year, 24-hour)



■ What are we looking for?

- Undersized sewers
- Areas of ponding that affect roads/buildings
- Critical overland flow paths



Phase 2 – Alternatives Development

■ Develop Future Roadmap

- Use existing model results to identify focus areas
- Prepare suite of projects to address flooding
 - Larger sewers
 - Overland conveyance
 - Detention / retention
 - Green infrastructure
- Prepare criteria to assess alternatives
- Publish prioritized list of projects and policies



Resident Survey

■ Why survey is valuable?

- Intense rainfall events are unpredictable!
- Model results are not perfect
- Allow for verifying model results
- Tailor stormwater master plan to flooding problems residents have experienced
- Ground-truth model with resident survey results and reports from Village



What are we doing here?

- Provide details of the Stormwater Master Plan Development Process
- Provide the opportunity for stakeholders to provide additional survey information and feedback
- Forum for other stormwater related discussions



Contact Us

■ Project Website

<https://glencoestormwater.org/>

■ Village Contact

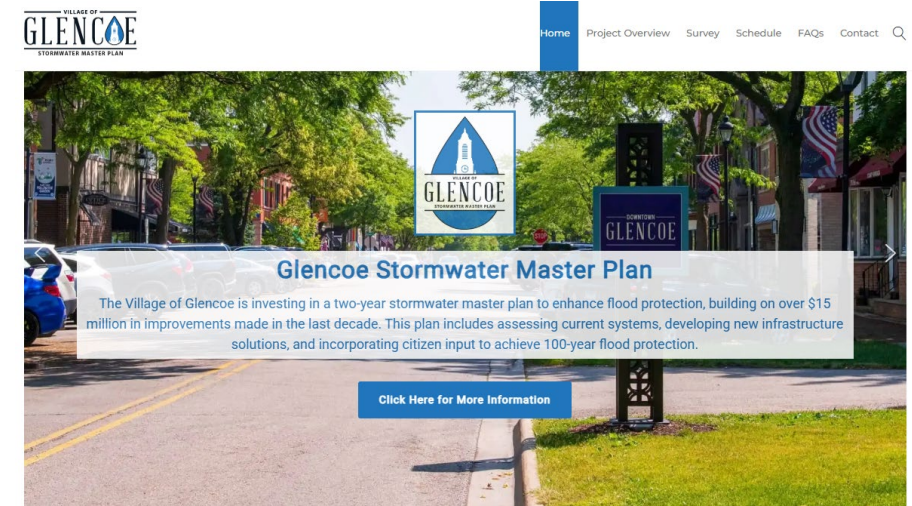
– James Tigue, P.E., CFM

Village Engineer

■ Baxter & Woodman Contact

– Zach Schuster, P.E., Ph.D., CFM

Project Manager



Home > Contact

Contact

Contact Us

Name*

Email*

Phone

